

VERSALAM2700P LAMINATOR PARTS MANUAL

*** BASED ON: STANDARD FEATURES LIST VERSION 28.2**

DRAWING NO.	PART NO.	DESCRIPTION
001	RLM-P1BR	BRACKET
001-1	RLM-P1-1 (BGE)	UPPER BRACKET (L)
001-2	RLM-P1-2 (BGE)	UPPER BRACKET (R)
001-3	RLM-P1-3 (BGE)	LOWER BRACKET (L)
001-4	RLM-P1-4 (BGE)	LOWER BRACKET (R)
002	RLM-2A	TOP/BOTTOM ROLLER
004	RLM-3(BGE)	FEED TRAY
005	RLM-4	FIXING PLATE FOR HEATER
007	RLM-6	PRESS PLATE
008	RLM-7	POWER BRACKET (R)
008-1	RLM-7-1	POWER BRACKET (L)
009	RLM-8L	HEATER BRACKET (R)
009-1	RLM-8L-1	HEATER BRACKET (L)
010	RLM-9(BGE)	MIDDLE GUIDE PLATE
012	3H1-D30	THERMO SET
013	RLM-12	FEEDING PLATE (UPPER)
013-1	RLM-12-1	FEEDING PLATE (LOWER)
014	RLM-13	PAD
015	RLM-14NA	TOP ROD
015-1	RLM-14NA-1	BOTTOM ROD
016	RLM-15A	EXPAND SHAFT (Ø5)
016-1	RLM-15B	EXPAND SHAFT (MOVABLE)
017	RLM-16	FIXED SHAFT
018	RLM-17	ADJUSTMENT SHAFT
019	RLM-P18 (BGE)	REAR PLATE
020	RLM-19 (BGE)	INNER COVER
021	RLM-20-1	FRONT ROLLER SPROCKET (32T)
022	RLM-20-2	REAR ROLLER SPROCKET(31T)
023	RLM-20-3	MOTOR SPROCKET (31T)
025	RLM-21	FIXED PLATE
026	RLM-22N (BGE)	SIDE COVER (R)
026-1	RLM-22-1N (BGE)	SIDE COVER (L)
027	RLM-23	TENSION ADJUSTMENT KNOB

027-1	M4*0.7	SCREW
027-2	Φ9	CAP
027-3	RLM-W1	WASHER
028	RLM-P25	CU BUSH
029	RLM-25	CU BUSH
030	RLM-26	PANNEL RACK
031	RLM-27T	CONTROL PANEL
032	RLM-27-AU	PCB (CPU#D7D)
032-1	RLM-27AU-1	LED PCB
033	RLM-28TA	BUTTON NAMEPLATE
034	RLM-29	THANSMIT PARTS
035	FD-39	BUSH
036	RLM-PVN	HEATER SET
	RLM-46	QUARTZ TUBE CAP
036-1	3H1-P11	BAKELITE SHEET
036-2	D266O-1	WIRE (HEATER TO PCB)
036-3	D226N	WIRE (UPPER & LOWER HEATER)
037	RLM-32(BGE)	HANDLE
038	RLM-33(BGE)	SIDE GUIDE (L)
038-1	RLM-33-A(BGE)	SIDE GUIDE (R)
039	3H1-P9A	CERAMIC PAD
040	RLM-37N	SLITTER
116	RLM-47	BLADE
040-1	RLM-37N-1	SLITTER
116	RLM-47	BLADE
041	RLM-39-RS	SPACER SUPPORT
042	CB-3	GUIDE SCREW & NUT
044	RLM-42	SPRING
045	RLM-43	SPRING
046	RLM-44	CORE GRIPPER
047	3H1-D33	TEMPERATURE SENSOR WITH WIRE
047-1	3H1-D33-1	TEMPERATURE SENSOR WITH WIRE
048	SB-4	FOOT PAD
049	RLM-45	CHAIN
052	RLM-48	POWER SWITCH
053	RLM-49	POWER CORD
054	RLM-50	FUSE SET

055-1	EP-10-20A	FUSE
055-2	EP-10-15A	FUSE
056	RLM-53-SB	WIRE JACKET
057	RLM-54	PAD
058	RLM-55	PAD
059	RLM-56	HEAT SINK (ALUMINUM)
061	RLM-58-1 (BGE)	3" ADAPTER
062	RLM-59A	SHIELD
063	RLM-60	FIXED POLE
064	RLM-52	CUT-OFF FUSE
065	RLM-62	TRANSFORMER
067	RLM-27-3	CONNECT WIRE
078	RLM-P61	STAND
080	RLM-P61-I	BAR
083	RLM-P61-6	TUBE CAP
084	RLM-P61-7	WHEEL
086	RLM-P63	FAN
086-1	RLM-P63-1	FAN'S NET
087	RLM-P64	FIXED PLATE
090	3RLM-P8	SWITCH (FAN)
091	RLM-S1	MOTOR CONTROL SWITCH
092	3LM-E3	SWITCH (BOTTOM ROLLER HEATER)
095	RLM-P72	LIMIT SWITCH
096	RLM-P73	BUSH
097	RLM-BR2	BACK ROLLER
097-1	RLM-BR8A	TURNING BAR
097-2	RLM-BR7-E	FIXING PLATE (FOR TURNING BAR)
097-3	RLM-37-1	BUSH
098	RLM-LR3	FIXED PLATE A
099	RLM-LR4	FIXED PLATE B
100	RLM-LR5	FIXED PLATE C
101	RLM-LR6	FIXED PLATE D
108	CB-3L	REGISTER SCREW
111	NH-D37A	FIXING PLATE (R)
112	NH-D38A	FIXING PLATE (L)
114	RLM-S3	VARISITOR
115	RLM-S4	RING CORE

	LABEL-1	BRAND(VERSALAM2700P)
	LABEL-4	SPEED LABEL
	LABEL-5	CLEAN ROLLERS
	LABEL-6	OPERATION INSTRUCTION
	LABEL-11	UP-DOWN

<u>PARTS SET</u>			
Parts code	Containment		Item
E-RLM-01	015	RLM-14NA	Upper supply roller
	046	RLM-44	
	096	RLM-P73	
E-RLM-02	015-1	RLM-14NA-1	Lower supply roller
	046	RLM-44	
	096	RLM-P73	
D-RLM-03	032	RLM-27-AU	PCB set
	059	RLM-56	
A-RLM-04B	036	RLM-PVN	Heater set (parallel connetcion)
	036	RLM-46 *2	
A-RLM-05B	004	RLM-3(BGE)	Feed tray (beige)
	038	RLM-33(BGE)	
	038-1	RLM-33-A(BGE)	
	042	CB-3	
A-RLM-06U	013	RLM-12	Upper tension adjustment knob
	014	RLM-13	
	027	RLM-23	
	027-3	RLM-W1	
	045	RLM-43	
	057	RLM-54	
	058	RLM-55	
A-RLM-06L	013-1	RLM-12-1	Lower tension adjustment knob
	014	RLM-13	
	027	RLM-23	
	027-3	RLM-W1	
	045	RLM-43	
	057	RLM-54	
	058	RLM-55	
D-RLM-07I	012	3H1-D30	Temperature sensor (bottom roller)

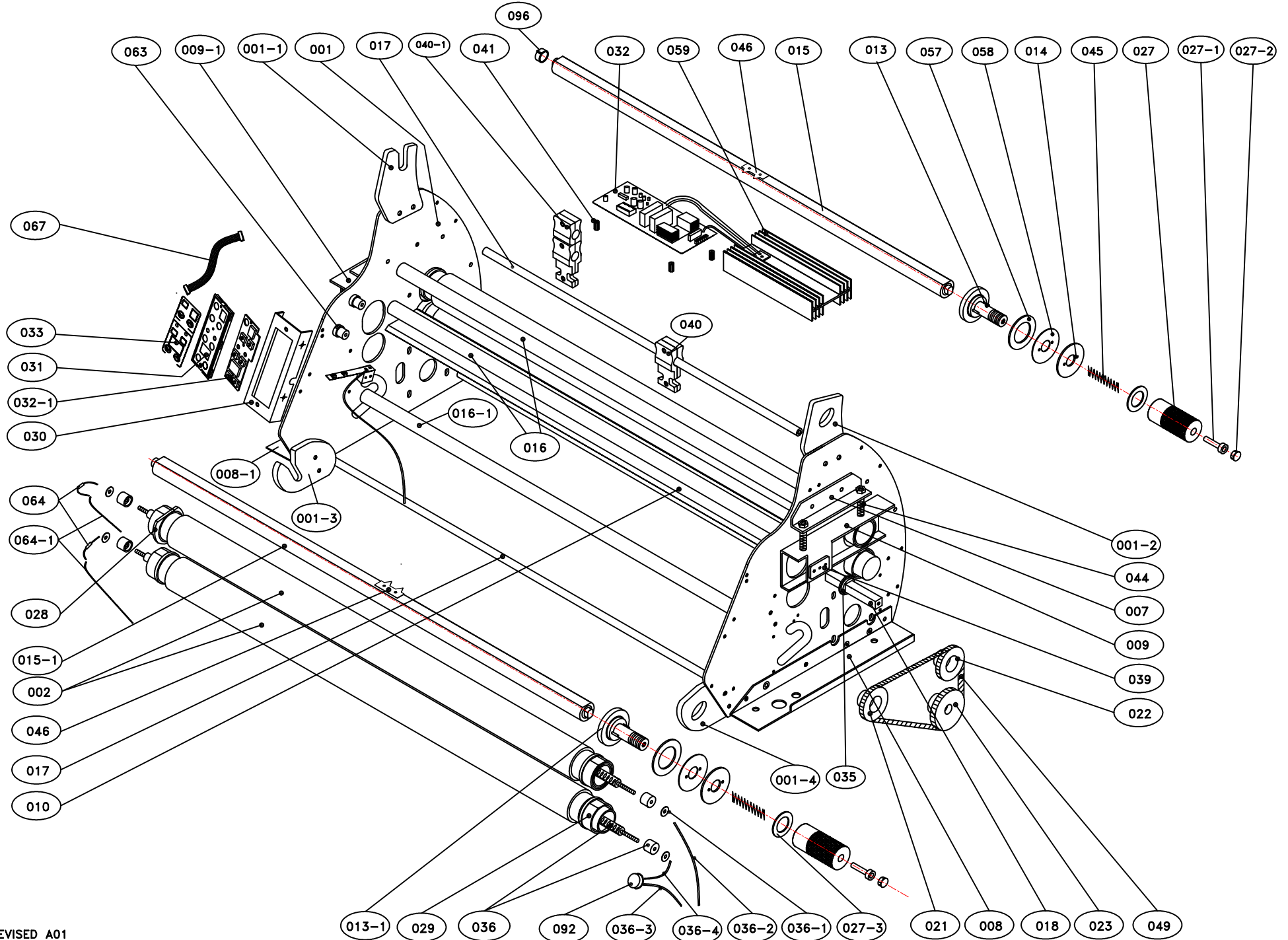
D-RLM-07L	047	3H1-D33	Temperature sensor (bottom roller)
D-RLM-07U	012	3H1-D30	Temperature sensor (top roller)
	047-1	3H1-D33-1	
E-RLM-08	078	RLM-P61 *2	Stand
	080	RLM-P61-I *2	
	083	RLM-P61-6 *8	
	084	RLM-P61-7 *4	

black
slitter (for two side lamiantion)
slitter (for one side lamiantion)
for bottom roller
for top roller

beige color

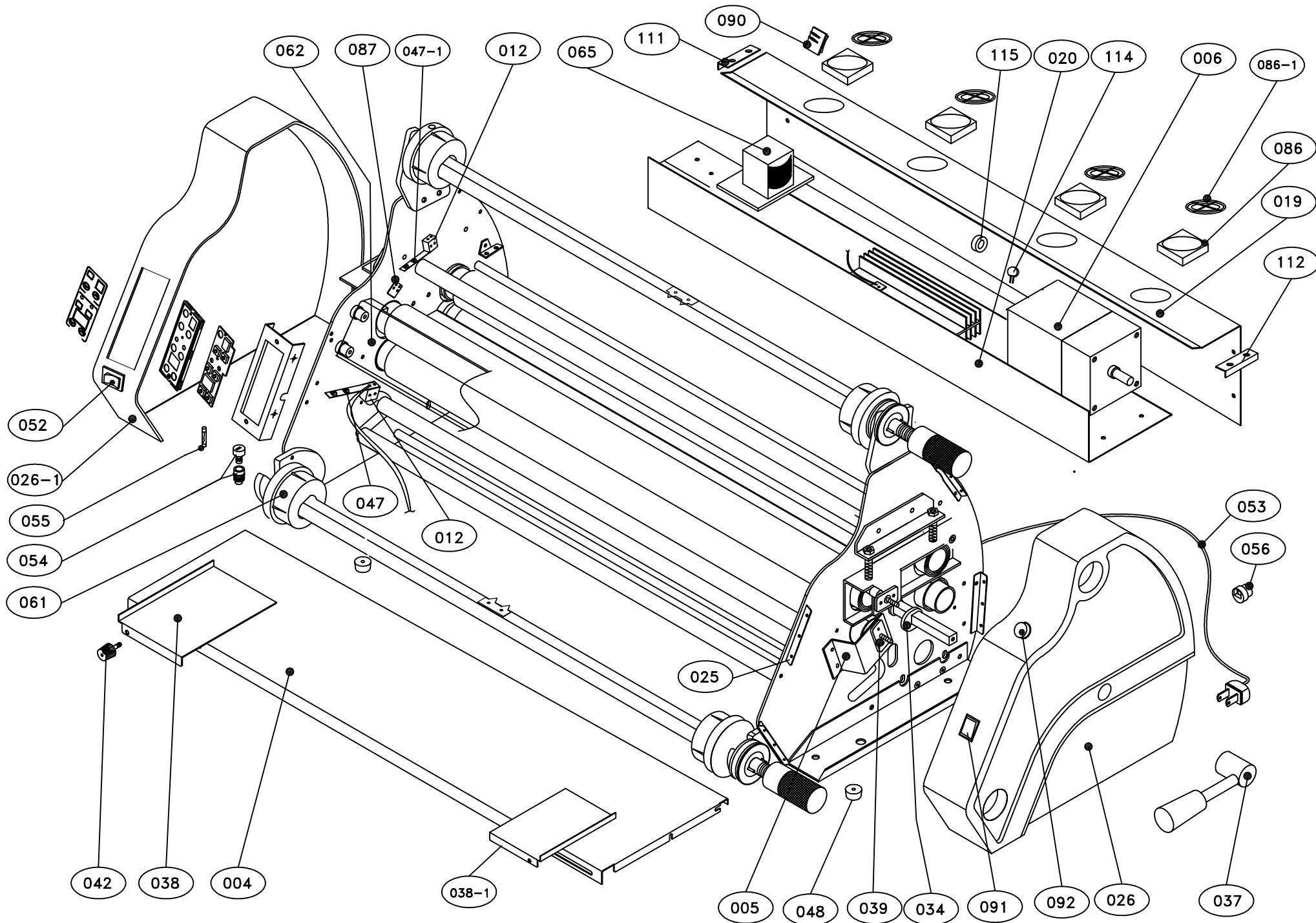
VERSALAM-2700-P ROLL- LAMINATOR

A



VERSALAM-2700-P ROLL - LAMINATOR

(B)



VERSALAM-2700-P ROLL - LAMINATOR

©

